

Commercial - CULPEPER, VA

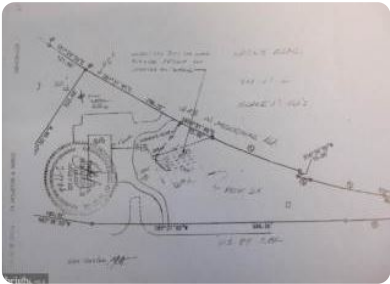
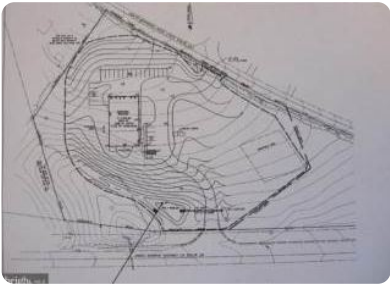


10029 James Monroe Highway, Culpeper, VA, 22701

Offered at \$595,000

5.55 Acres zoned CS (commercial services) Located on High Traffic Rt. 29 (James Monroe Hwy) just south of Culpeper. Direct access to Rt. 29 with entrance in place. Approximately 1000 ft of frontage on Rt. 29 and over 1000 ft on N. Merrimack Rd. Site plan approved, many uses approved, Auto service and sales, Hotel, Restaurant, Retail. The address shown is approximate for location. Also Land Lease.

0 Bedrooms
0 Bathrooms
Unknown sqft sqft
5.55 acre (lot size)
Built: 2012



Scan above on mobile device
for directions to this listing

Assist2Sell
vip@assist2sell.com



All information deemed reliable but not guaranteed. If your property is currently listed this is not meant as a solicitation.
©2026 Assist2Sell.com - Licensed according to agreed upon terms and conditions. This listing is courtesy of Berkshire Hathaway HomeServices PenFed Realty

