

Unimproved Land - Celeste, TX

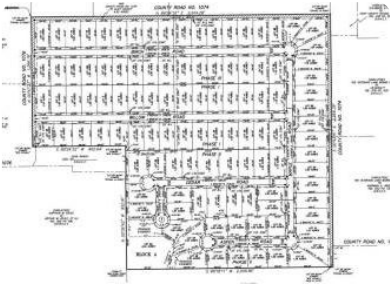


1 Acre Lot Willow Road, Celeste, TX, 75423

Offered at \$73,000

BRAND NEW residential subdivision is Under Development and Ready for you to Pick Your Favorite Lot. Lots will be ready around February 2023. \$750 holds your lot. A boutique 111 oversized lot subdivision. All lots are interior facing. All lots will be on the new interior Asphalt-Chip Seal roads. All lots are a minimum of 1 Acre in size with a minimum of 150' in front width. The County Road is being upgraded to Asphalt in front of this subdivision and all of county road 1076 is being upgraded to black-top oil sand with 6 in rock base all the way to FM 2194. Lots 1-38 are available in the Phase 1 now, with Phase 2 and 3 becoming available after Phase 1 sellout. With having an oversize 1 Acre lots in the country but also having paved roads and neighbors may be a perfect fit for your family. Builders are encouraged to take 1 or multiple lots. Bank loan is available for 10% down on land only of 5% land + construction loan. It is on the Bland ISD or Celeste ISD line. No Mobiles.

0 Bedrooms
0 Bathrooms
Unknown sqft sqft
1 acre (lot size)
Built: Unknown year



Scan above on mobile device
for directions to this listing

Assist2Sell
vip@assist2sell.com

Assist2Sell

All information deemed reliable but not guaranteed. If your property is currently listed this is not meant as a solicitation.
©2026 Assist2Sell.com - Licensed according to agreed upon terms and conditions. This listing is courtesy of ONE LLC dba BLVD Real Estate



<https://assist2sell.com/listing/1-acre-lot-willow-road-celeste-tx-75423/3yd-ntreis-20170344>