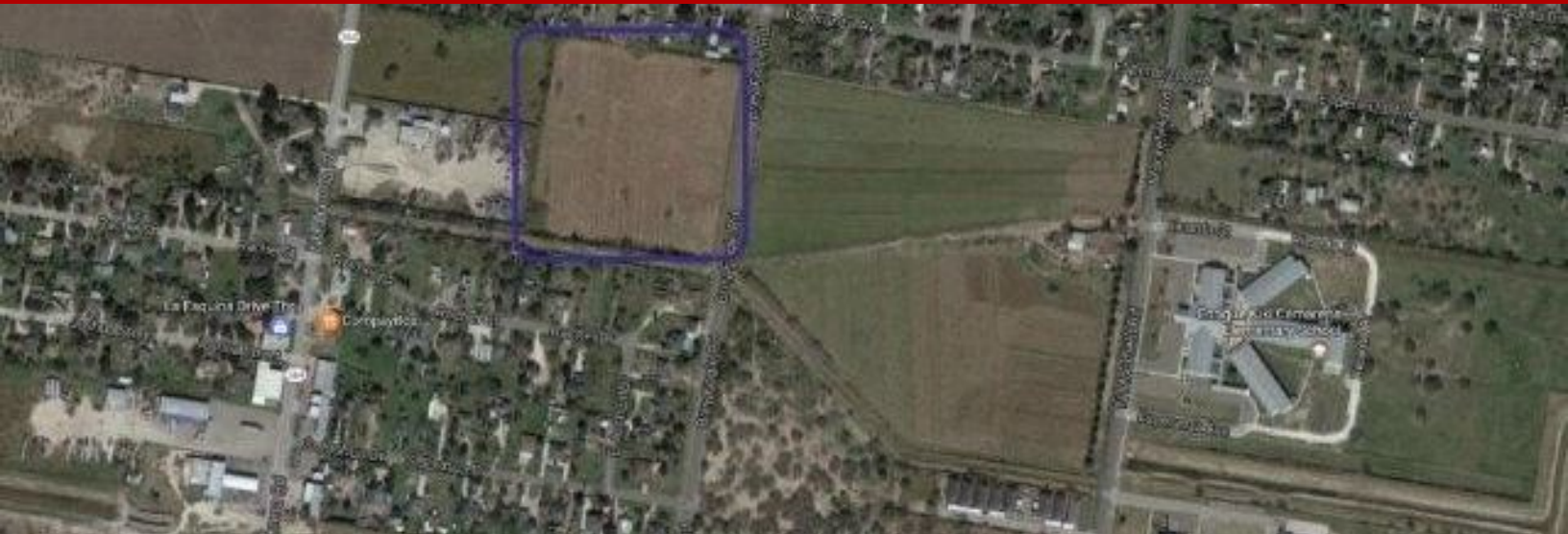


Acreage - Palmview, TX



0 N Shuerbach Road, Palmview, TX, 78572

Offered at \$1,200,000

GREAT LOCATION ACRAGE IDEAL FOR COMMERCIAL OR RESIDENTIAL DEVELOPMENT ACRAGE LOCATED BETWEEN GRIFFIN PARKWAY AND MILE 2 ON BREYFOGLE ROAD, WALKING DISTANCE TO SCHOOLS SHOPPING CENTERS AND GOVERMENT/CITY OFFICES GREAT LOCATION MOTIVATED SELLER MAKE AN OFFER.

0 Bedrooms
0 Bathrooms
Unknown sqft sqft
10 acre (lot size)
Built: Unknown year



Scan above on mobile device for directions to this listing

Assist2Sell
vip@assist2sell.com



All information deemed reliable but not guaranteed. If your property is currently listed this is not meant as a solicitation.
©2026 Assist2Sell.com - Licensed according to agreed upon terms and conditions. This listing is courtesy of RE/MAX elite

