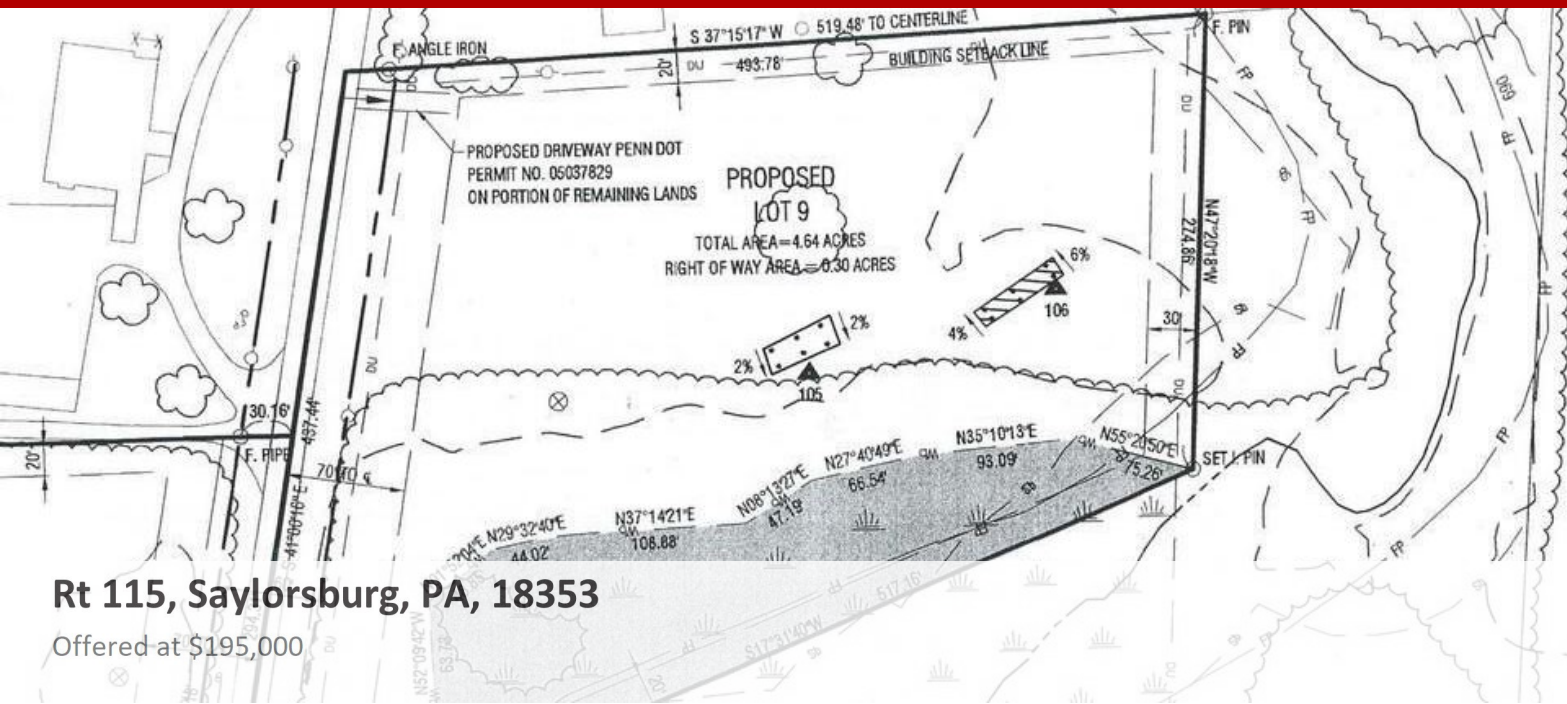


# Commercial/Industrial/Business - Saylorsburg, PA

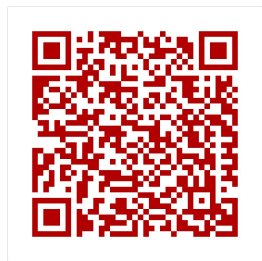


## Rt 115, Saylorsburg, PA, 18353

Offered at \$195,000

Level and mostly clear lot on Route 115 in Ross Township available for commercial development. There is currently a minimum use PennDOT Highway Occupancy Permit in place, septic testing complete, and a wetlands delineation was done. The site's zoning is Villiage Commercial and allows a wide variety of residential, retail, and commercial uses.

0 Bedrooms
0 Bathrooms
0 sqft
4.64 acre (lot size)
Built: Unknown year



Scan above on mobile device for directions to this listing

Assist2Sell  
vip@assist2sell.com



All information deemed reliable but not guaranteed. If your property is currently listed this is not meant as a solicitation.  
©2026 Assist2Sell.com - Licensed according to agreed upon terms and conditions. This listing is courtesy of TACM Commercial Realty Inc.

