

Ranch - Marshalltown, IA



1109 E Southridge Road, Marshalltown, IA, 50158

Offered at \$289,900

New and Amazing! Check out this great opportunity for main floor living at its finest. This NEW construction home is conveniently built near Timber Creek Park, walking trail/pond, shopping, edge of town, schools, new medical facilities and more! Walk-in this well-built home and let the quality speak. This home offers an open floor plan, custom kitchen cabinetry with soft closed hinges, stainless steel appliances, and modern finishes to impress. This home features 3 bedrooms, 2 bathrooms, 2x6 construction, and the list goes on. This property includes the two lots to the East making it more than 3/4 Acres lot size! Ask about the potential Tax abatement program or \$10,000 cash incentive program. Call today to for your private tour!

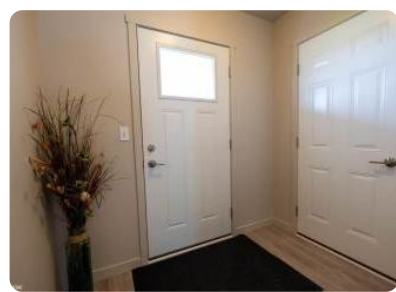
3 Bedrooms

1 Bathrooms

1,200 sqft

0.86 acre (lot size)

Built: Unknown year



Scan above on mobile device
for directions to this listing

Assist2Sell
vip@assist2sell.com

Assist2Sell

All information deemed reliable but not guaranteed. If your property is currently listed this is not meant as a solicitation.
©2026 Assist2Sell.com - Licensed according to agreed upon terms and conditions. This listing is courtesy of Premier Real Estate Group, Inc.



<http://assist2sell.com/listing/1109-e-southridge-road-marshalltown-ia-50158/3yd-mirmlsia-6304246>