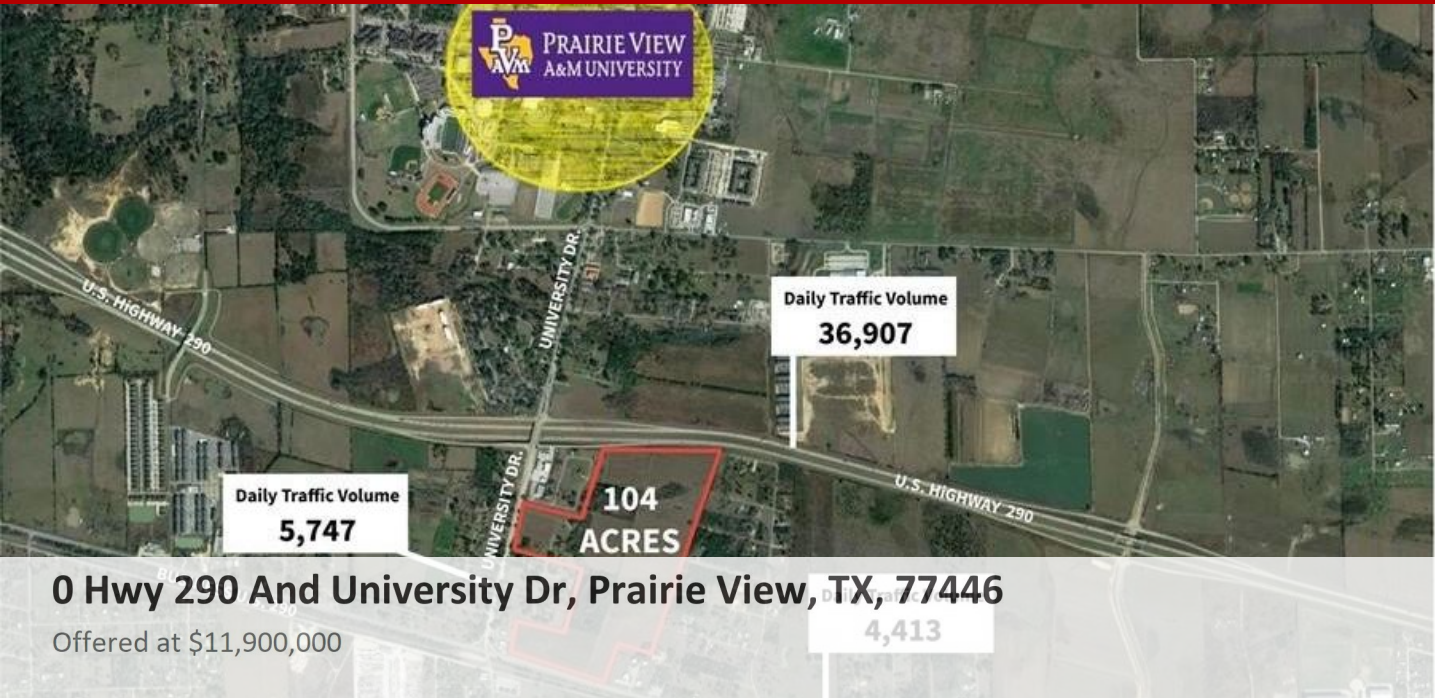


Lots - Prairie View, TX

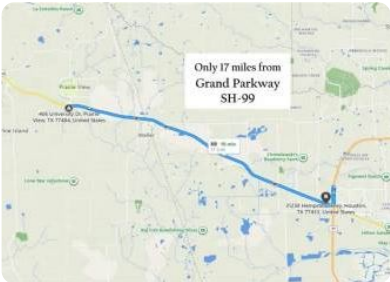


0 Hwy 290 And University Dr, Prairie View, TX, 77446

Offered at \$11,900,000

Located in Waller County which is a rapidly growing county in southeast Texas. Minutes from Prairie View A&M with 522 feet of frontage on University Dr. 1304' Frontage on Business 290 and 1428' Frontage on HWY 290. Frontage on 3 Major Throughfares! Not in Flood Zone! Ready for Development! The property has been annexed into the City of Waller for access to full city utilities. Perfect location for a residential subdivision, industrial park or a combination of both. Please verify all information.

0 Bedrooms
0 Bathrooms
Unknown sqft sqft
102.25 acre (lot size)
Built: Unknown year



Scan above on mobile device
for directions to this listing

Assist2Sell
vip@assist2sell.com

Assist2Sell

All information deemed reliable but not guaranteed. If your property is currently listed this is not meant as a solicitation.
©2026 Assist2Sell.com - Licensed according to agreed upon terms and conditions. This listing is courtesy of Evan Lloyd Properties, Inc.

